

ABSOPULSE

ELECTRONICS LTD.

RUGGED, HIGH PERFORMANCE POWER CONVERSION

Established in 1982, Absopulse Electronics specializes in the design and manufacture of high-reliability, heavy-duty switch-mode power conversion products for railway, industrial, airborne, military, marine, mining, utility and telecommunications applications.

Extensive product range.

Our product line includes AC/DC power supplies, rectifiers and battery chargers, DC/DC converters, sine-wave inverters, phase and frequency converters, DC-input dimmable back-light inverters for LCD displays, DC-output UPS systems, laboratory power supplies and complete power systems in 19" and 23" racks.



Tornado GR.4 photo: BAE Systems

Solutions to any design challenge.

We can meet any electrical configuration requirements, with output power ranging from a few watts to more than 30kW. Working from several hundred field-proven designs, our engineering team will develop a solution for your most demanding design challenges while keeping design costs low and lead times short.

Flexible mechanical designs.

Whatever your space constraints, we will ensure that our power supplies meet your mechanical requirements, exactly. Our standard designs are chassis or DIN rail-mountable units in sealed or convection cooled enclosed packages. A number of Absopulse's power supplies are available in Eurocard plug-in format for modular power systems and can be delivered pre-wired 19in or 23in shelves. Similarly, power distribution systems can be configured to your specifications.



Voyager train photo: Bombardier

Rugged designs for very harsh environments.

Designed to ensure reliable operation under extreme field conditions, our rugged lines of power supplies operate in ambient temperatures ranging from -40°C to +85°C. They are immune to shock, vibration, dust, moisture, humidity, salt, chemicals, oil and fog. Most designs are conduction/convection cooled. Absopulse's rugged power supplies are typically designed to meet EN50155, EN50121-3-2 railway standards, UL508, EN60950 and equivalent standards for heavy industry, DO160 for airborne applications as well as MIL-STD-461 and MIL-STD-810 military standards.



Our field-proven designs offer high efficiency and full protection against surges and transients, contributing to low lifecycle costs. With most designs meeting EN55022 Class B requirements, they can be safely used in EMI sensitive environments. A wide range of options include output fail alarms, redundancy, multiple inputs or outputs. Generous design headroom and the use of high quality components contribute to high MTBF ratings. All Absopulse power supplies are designed for a minimum operating life of 20 to 30 years.

Rugged Product Highlights

DC/DC Converters

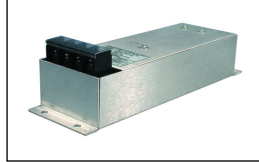


Capabilities

Inputs: 12Vdc to 800Vdc

Outputs: 3.3Vdc to 300Vdc (or higher)

Power: 10W to kilowatts



AC/DC Power Supplies and Battery Chargers



Capabilities

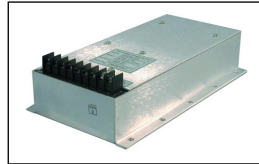
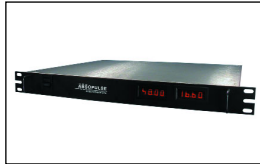
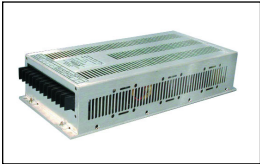
Inputs: 115Vac to 560Vac.

Single phase or 3-phase.

50Hz - 400Hz

Outputs: 3.3Vdc to 300Vdc (or higher)

Power: 30W to kilowatts



Sine Wave Inverters & Frequency Converters



Capabilities

Inputs: 12Vdc to 800Vdc, 115Vac to 560Vac.
Single phase or 3-phase

Outputs: 115Vac or 230Vac, 50Hz - 400Hz.
Single phase or 3-phase

Power: 10W to 30kW



Absopulse Electronics Ltd.
110 Walgreen Rd.
Ottawa, Ontario
K0A 1L0, Canada
Tel: 613-836-3511
Fax: 613-836-7488
E-mail: absopulse@absopulse.com

Absopulse Marketing Europe GmbH
P.O. Box 1501
CH-8620 Wetzikon
Switzerland
Tel: +41-78-896-5049
Fax: +41-44-932-3844
E-mail: absopulse@bluewin.ch

Visit us at www.absopulse.com